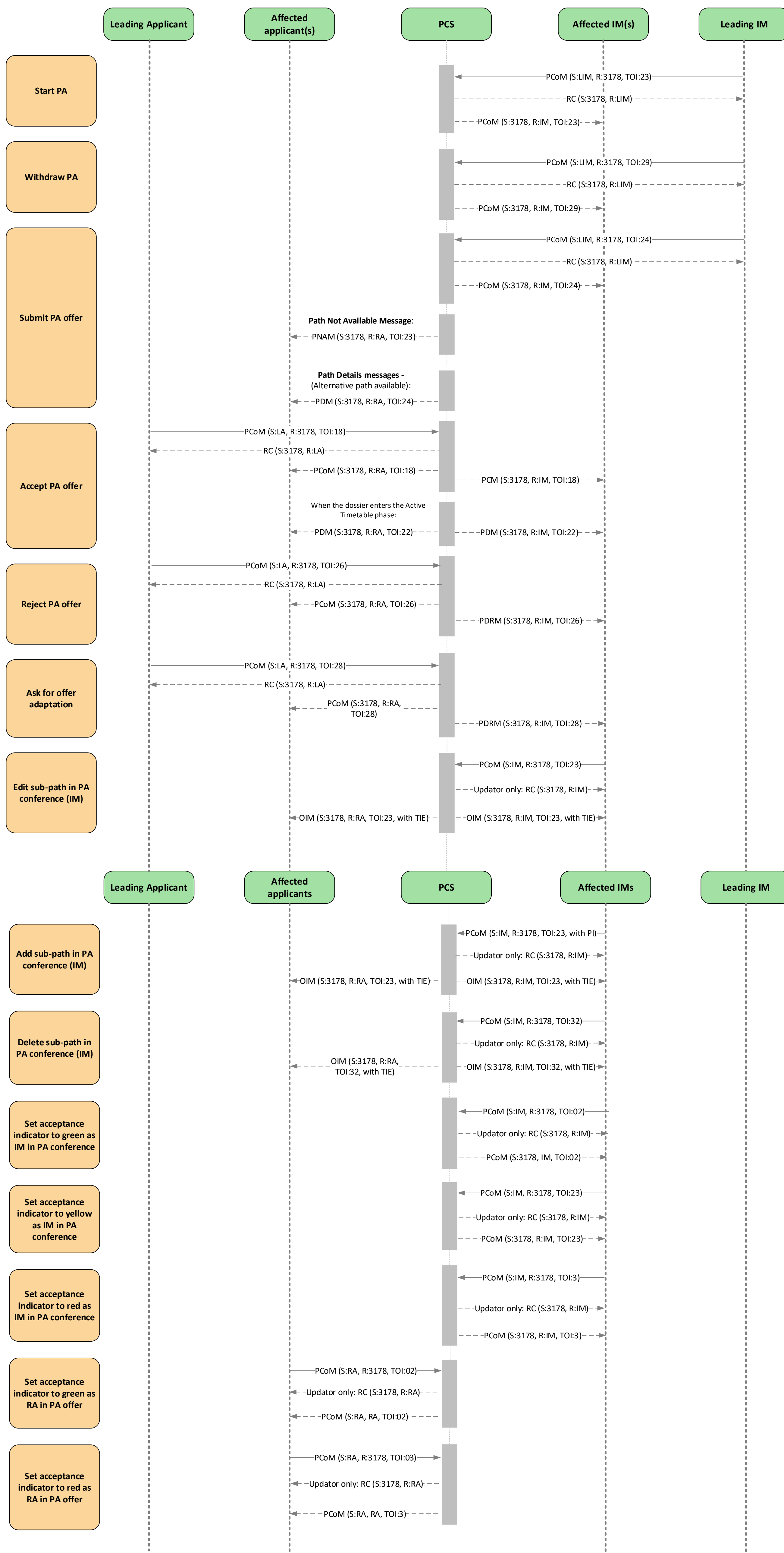


Sequence diagram for PCS TAF TSI communication - Path Alteration Process

Version: 2.1 - Released on 05.07.2022



General Information applicable to all messages in the Path Alteration process

- Message Status: 1
- Type Of Request: 3

Legend

- Leading applicant: refers to the applicant of the pair from the IM initiating the PA process.
- Affected applicant(s): includes Leading Applicant
- Leading IM: refers to the leading IM only for the path alteration process.
- Affected IM(s): includes Leading IM
- PCoM: PathCoordinationMessage
- PRM: PathRequestMessage
- PDM: PathDetailsMessage
- PCM: PathConfirmedMessage
- PDRM: PathDetailsRefusedMessage
- OIM: ObjectInfoMessage
- TI: TrainInformation
- PI: PathInformation
- TIE: TrainInformationExtended
- PIE: PathInformationExtended
- OIT: ObjectInfoType
- S: Sender
- R: Recipient
- TOI: TypeOfInformation
- TOR: TypeOfRequest
- X: different values can be used
- MS: MessageStatus

Changes compared to the previous version of the diagram (version 2)

- No major changes: alignment of sender and recipient information with the origin and destination of the message